

DO NOT SCALE DRAWING

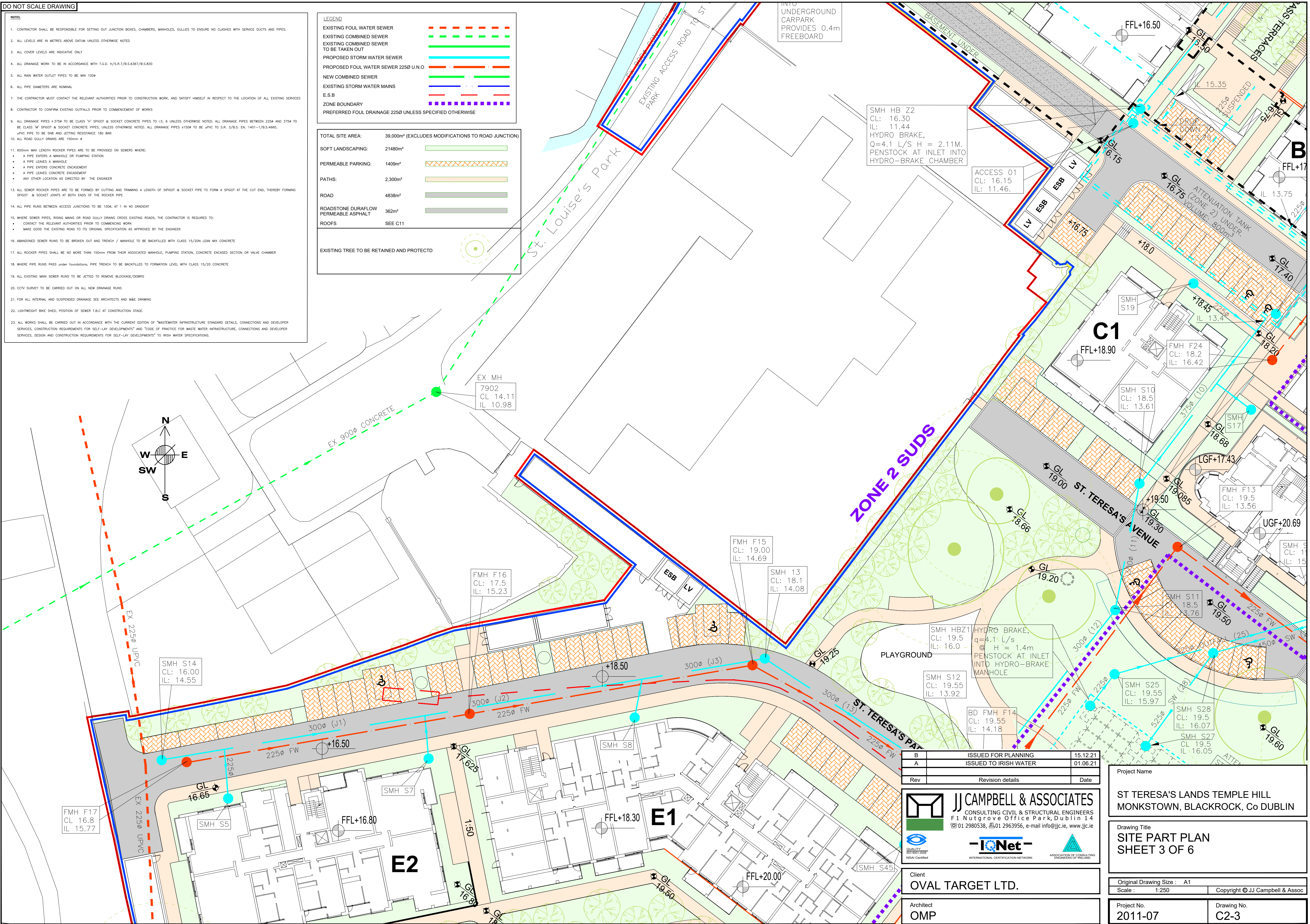
NOTES

1. CONTRACTOR SHALL BE RESPONSIBLE FOR SETTING OUT JUNCTION BOXES, CHAMBERS, MANHOLES, GULLIES TO ENSURE NO CLASHES WITH SERVICE DUCTS AND PIPES.
2. ALL LEVELS ARE IN METRES ABOVE DATUM UNLESS OTHERWISE NOTED
3. ALL COVER LEVELS ARE INDICATIVE ONLY
4. ALL DRAINAGE WORK TO BE IN ACCORDANCE WITH T.G.D. H/S/R/7/B.S.6397/B.S.830
5. ALL RAIN WATER OUTLET PIPES TO BE MIN 100#
6. ALL PIPE DIAMETERS ARE NOMINAL
7. THE CONTRACTOR MUST CONTACT THE RELEVANT AUTHORITIES PRIOR TO CONSTRUCTION WORK, AND SATISFY HIMSELF IN RESPECT TO THE LOCATION OF ALL EXISTING SERVICES
8. CONTRACTOR TO CONFIRM EXISTING OUTFALLS PRIOR TO COMMENCEMENT OF WORKS
9. ALL DRAINAGE PIPES >375# TO BE CLASS 'V' SPIGOT & SOCKET CONCRETE PIPES TO I.S. 6 UNLESS OTHERWISE NOTED. ALL DRAINAGE PIPES BETWEEN 225# AND 375# TO BE CLASS 'W' SPIGOT & SOCKET CONCRETE PIPES, UNLESS OTHERWISE NOTED. ALL DRAINAGE PIPES <150# TO BE UPVC TO S.R. 3/B.S. EN. 1401-1/B.S.4660, UPVC PIPE TO BE S/NB AND JETTING RESISTANCE 180 BAR.
10. ALL ROAD GULLY DRAINS ARE 150mm #
11. 600mm MAX LENGTH ROCKER PIPES ARE TO BE PROVIDED ON SEWERS WHERE:
 - A PIPE ENTERS A MANHOLE OR PUMPING STATION
 - A PIPE LEAVES A MANHOLE
 - A PIPE ENTERS CONCRETE ENCLOSURE
 - A PIPE LEAVES CONCRETE ENCLOSURE
 - ANY OTHER LOCATION AS DIRECTED BY THE ENGINEER
12. ALL SEWER ROCKER PIPES ARE TO BE FORMED BY CUTTING AND TRAMMING A LENGTH OF SPIGOT & SOCKET PIPE TO FORM A SPIGOT AT THE CUT END, THEREBY FORMING SPIGOT & SOCKET JOINTS AT BOTH ENDS OF THE ROCKER PIPE
13. ALL PIPE RUNS BETWEEN ACCESS JUNCTIONS TO BE 100#, AT 1 IN 40 GRADIENT
14. WHERE SEWER PIPES, RISING MAINS OR ROAD GULLY DRAINS CROSS EXISTING ROADS, THE CONTRACTOR IS REQUIRED TO:
 - CONTACT THE RELEVANT AUTHORITIES PRIOR TO COMMENCING WORK
 - MAKE GOOD THE EXISTING ROAD TO ITS ORIGINAL SPECIFICATION AS APPROVED BY THE ENGINEER
15. ABANDONED SEWER RUNS TO BE BROKEN OUT AND TRENCH / MANHOLE TO BE BACKFILLED WITH CLASS 15/20# LEAN MIX CONCRETE
16. ALL ROCKER PIPES SHALL BE NO MORE THAN 150mm FROM THEIR ASSOCIATED MANHOLE, PUMPING STATION, CONCRETE ENCASED SECTION OR VALVE CHAMBER
17. WHERE PIPE RUNS PASS UNDER FOUNDATIONS, PIPE TRENCH TO BE BACKFILLED TO FORMATION LEVEL WITH CLASS 15/20# CONCRETE
18. ALL EXISTING MAIN SEWER RUNS TO BE JETTED TO REMOVE BLOCKAGE/DEBRIS
19. CCTV SURVEY TO BE CARRIED OUT ON ALL NEW DRAINAGE RUNS
20. FOR ALL INTERNAL AND SUSPENDED DRAINAGE SEE ARCHITECTS AND MAKE DRAWING
21. LIGHTWEIGHT BIKE SHED, POSITION OF SEWER T.B.C AT CONSTRUCTION STAGE.
22. ALL WORKS SHALL BE CARRIED OUT IN ACCORDANCE WITH THE CURRENT EDITION OF "WASTEWATER INFRASTRUCTURE STANDARD DETAILS, CONNECTIONS AND DEVELOPER SERVICES, CONSTRUCTION REQUIREMENTS FOR SELF-LAY DEVELOPMENTS" AND "CODE OF PRACTICE FOR WASTE WATER INFRASTRUCTURE, CONNECTIONS AND DEVELOPER SERVICES, DESIGN AND CONSTRUCTION REQUIREMENTS FOR SELF-LAY DEVELOPMENTS" TO IRISH WATER SPECIFICATIONS.

LEGEND

- EXISTING FOUL WATER SEWER
EXISTING COMBINED SEWER
EXISTING COMBINED SEWER TO BE TAKEN OUT
PROPOSED STORM WATER SEWER
PROPOSED FOUL WATER SEWER 225# U.N.O
NEW COMBINED SEWER
EXISTING STORM WATER MAINS
E.S.B
ZONE BOUNDARY
PREFERRED FOUL DRAINAGE 225# UNLESS SPECIFIED OTHERWISE

TOTAL SITE AREA:	39,000m ² (EXCLUDES MODIFICATIONS TO ROAD JUNCTION)
SOFT LANDSCAPING:	21480m ²
PERMEABLE PARKING:	1409m ²
PATHS:	2,300m ²
ROAD	4838m ²
ROADSTONE DURAFLOW PERMEABLE ASPHALT	362m ²
ROOFS	SEE C11
EXISTING TREE TO BE RETAINED AND PROTECTD	



B	ISSUED FOR PLANNING	15.12.21
A	ISSUED TO IRISH WATER	01.06.21
Rev	Revision details	Date

JJ CAMPBELL & ASSOCIATES
CONSULTING CIVIL & STRUCTURAL ENGINEERS
F1 Nutgrove Office Park, Dublin 14
☎01 2980538, ☎01 2963956, e-mail info@jcc.ie, www.jcc.ie

IQNet
INTERNATIONAL CERTIFICATION NETWORK

Client
OVAL TARGET LTD.

Architect
OMP

Project Name	
ST TERESA'S LANDS TEMPLE HILL MONKSTOWN, BLACKROCK, Co DUBLIN	
Drawing Title	
SITE PART PLAN SHEET 3 OF 6	
Original Drawing Size : A1	
Scale : 1:250	Copyright © JJ Campbell & Assoc
Project No. 2011-07	Drawing No. C2-3